

ABG HOSPITALITY

HOSPITALITY
BATHROOM
SOLUTIONS



ABG HOSPITALITY

Hospitality solutions that fit any level of hospitality property-
Economy, Select Service, and Premium. ABG Hospitality is
the one-stop shop for your hospitality bathware.

Visit us at
ABGHospitality.com



Innovative Hospitality Solutions

Classic Offering

- Aquatic AcrylX™ Products



Select Offering

- IMI Cast Marble LiteCast and MasterCast
- Bootz Porcelain Enameled Products



Premium Offering

- DreamLine Doors
- DreamStone Wall Surrounds
and Shower Bases
- Swan Surfacing

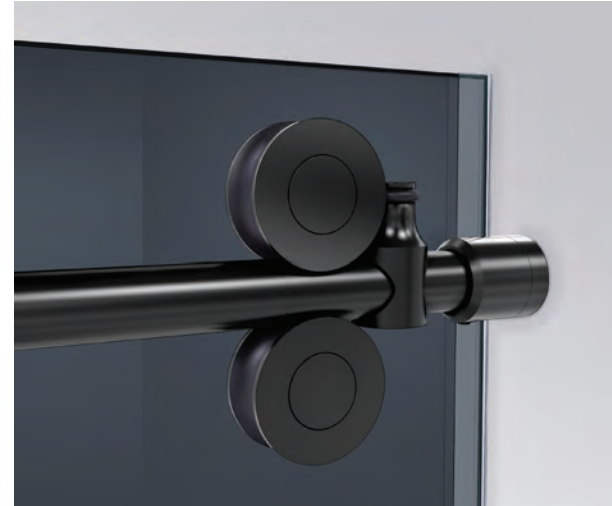
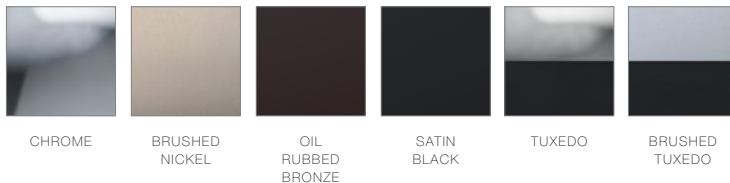


Enigma-XO Smoked Gray Glass

Enclosure

- Combination of elegance and style brought together within a modern and fully frameless design
- Striking stainless steel hardware available in multiple incredible finishes and new smoke gray or clear glass options
- Premium 3/8 in. (10 mm) thick certified tempered glass with exclusive ClearMax water and stain resistant glass coating
- Model can be trimmed up to 4 in. for width adjustment

AVAILABLE FINISHES:



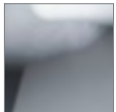


Aqua Uno

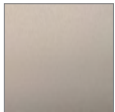
Tub Door

- A fresh look with a sophisticated frameless design for an amazing value
- Frameless curved glass design with a European style
- Quality 1/4 in. (6 mm) thick certified clear tempered glass
- Reversible for a right or left wall installation to fit your specific layout

AVAILABLE FINISHES:



CHROME



BRUSHED
NICKEL



OIL
RUBBED
BRONZE



SATIN
BLACK



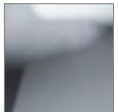


Charisma-X

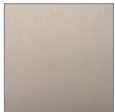
Sliding/Bypass Door

- Dual sliding design for a right or left walk-in opening to fit your specific layout
- Full length SafeClose bumpers within wall profiles on both sides for safe and secure functionality
- Premium 3/8 in. (10 mm) thick certified tempered glass with exclusive ClearMax water and stain resistant glass coating
- Wall profiles accommodate up to 3/8 in. for out-of-plumb (uneven walls)

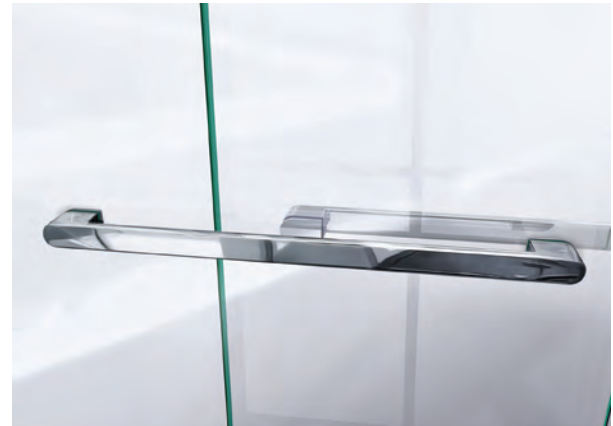
AVAILABLE FINISHES:



CHROME



BRUSHED
NICKEL





French Linea

Shower Screen

- Frameless walk-in shower design with an open-entry, doorless style
- Premium 3/8 in. (10mm) thick certified tempered glass for an upscale look with DreamLine's exclusive ClearMax water and stain resistant glass coating
- JetGlaze glass pattern offers a unique mullion look without the metal framing
- U-channel allows up to 1/2 in. adjustment for out-of-plumb (uneven walls)

AVAILABLE FINISHES:



SATIN
BLACK



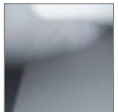


Prism Plus

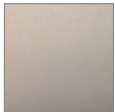
Swing Door

- Premium 3/8 in. (10 mm) thick certified tempered glass
- Patented L-Bar™ support brackets provide an unobstructed look and structural support
- Reversible for a right-hand or left-hand door opening
- Adjustment: up to 1/4 in. per side for width or out-of-plumb (uneven walls)

AVAILABLE FINISHES:



CHROME



BRUSHED
NICKEL



OIL
RUBBED
BRONZE



SATIN
BLACK



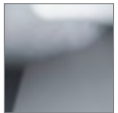


Marla

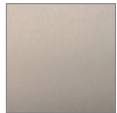
Shower Door

- Fully frameless 10mm (or 8mm) tempered glass, barn-style dual bypass sliding door with two stainless steel towel-bar style handles
- Adjustable, gliding, stainless steel wheels with an aluminum top rail, threshold, and wall profiles. Anti-collision blocks included in wall profiles, which provide out of plumb adjustment up to 3/8"
- Available sizes from 48" wide to 72" wide by 78" tall
- GlassShield Shatter Resistant Technology

AVAILABLE FINISHES:



CHROME



BRUSHED
NICKEL



OIL
RUBBED
BRONZE



MATTE
BLACK



Vela

Shower Door

- Fully frameless 8mm tempered glass, which includes LOTUS easy clean protection, barn-style single sliding door with back to back vertical handle on sliding door and convenient towel bar on fixed panel
- Rollers and handles are offered in 7 different finishes (monochrome or mix-finishes). Detachable door guides to distance the glass when cleaning, and reversible
- Available in a corner configuration with a return panel

AVAILABLE FINISHES:



CHROME

BRUSHED
NICKEL

MATTE
BLACK

CHROME-
MATTE
BLACK

BRUSHED
NICKEL-
MATTE
BLACK

BRUSHED
GOLD-
MATTE BLACK

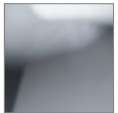


Strata

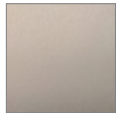
Shower Door

- Fully frameless 10mm (or 8mm) tempered glass, dual bypass sliding door with a header
- Adjustable gliding wheels in the stainless steel header with an aluminum threshold that allows for 3/8" out of plumb adjustment
- Available sizes from 48" wide to 72" wide by 78" tall
- Available with Frosted Glass
- GlassShield Shatter Resistant Technology

AVAILABLE FINISHES:



CHROME



BRUSHED
NICKEL



OIL
RUBBED
BRONZE



MATTE
BLACK

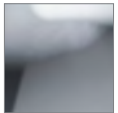


Essence-H Smoked Gray Glass

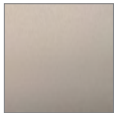
Sliding/Bypass Door

- Dual towel bars double as handles on each panel
- Double sliding bypass configuration allows entry to the shower from left or right side
- Quality 5/16 in. (8 mm) thick certified smoke gray tempered glass with DreamLine's exclusive ClearMax water and stain resistant glass coating
- Aluminum 3 in. wall profiles accommodate up to 1/4 in. for out-of-plumb (uneven) walls; SafeClose bumper guides within each wall profile

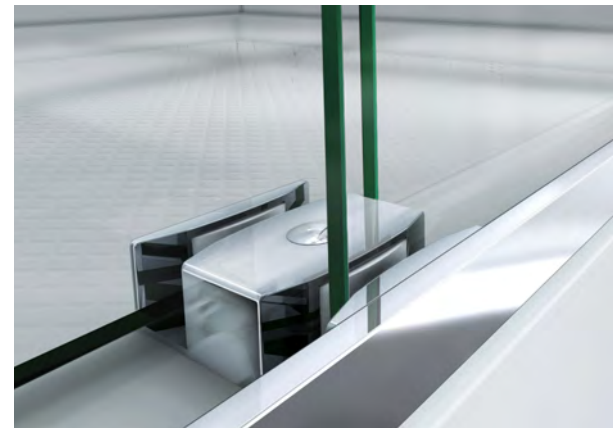
AVAILABLE FINISHES:



CHROME



BRUSHED
NICKEL





Swanstone Molded

Vanity Top

- One piece, seamless design with intergrated backsplash and bowl
- Solid Surface material that's beautiful, easy and designed to last a lifetime
- Available in different sizes, configurations and colors for any bathroom solution
- Available in 14 Standard & 30 special order color finishes

AVAILABLE FINISHES:





Swanstone Custom Molded

Vanity Top

- Custom Swan Vanity top from Swan Surfacing desgined for the Best Western Specification
- Swanstone offers high performance, low maintenace solutions perfect for any commercial or residential application
- Swan Sufacing offers limitless surfacing and fabricated options for any high traffic space
- Avaiable in 14 Standard & 30 special order color finishes

AVAILABLE FINISHES:





Oberto

Free-Standing Tub

- Seamless 1-piece bathtub with a symmetrical look including a maximized bathing well with comfortable backrests
- Linear waste and overflow in chrome pre-installed, with ample deck space for faucet installation and off-center drain
- Innovative leveling legs by MAAX for easy installation

AVAILABLE FINISHES:



WHITE

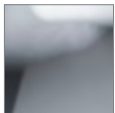


Boatz

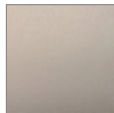
Bathtub

- Porcelain enameled steel bathtubs and shower bases are a known and trusted brand standard in hospitality, and are available with jobsite protective coating, known as ArmorShield
- Each of our porcelain enameled steel tubs and shower bases include a proprietary cast insulation on the bottom to deaden sounds and keep the water and space warm longer
- Our porcelain enameled steel products are sanitary and durable, allowing for easy maintenance and repairability
- Porcelain enameled products offer a superior product at a fraction of the cost of cast iron, and are much lighter to install

AVAILABLE FINISHES:



CHROME



BRUSHED
NICKEL



MATTE
BLACK



BRUSHED
GOLD

AVAILABLE COLORS:



WHITE



BISCUIT



BONE

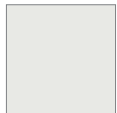


AcryIX SMIN

Bathtub

- Alcove bathtub solution with a deep bathing well, integral minimalist skirt, LH-RH drain options
- Includes AcryIX, which is an applied protective coating made of a blend of resin and glass, which creates increased surface durability, and helps to maintain the luster of the product for its lifetime
- Available options include whirlpool features and designer drain, waste & overflow options
- Tub sizes available from 60x30 to 60x42. AFR options have a skirt height 3" taller than their standard height. Package weight is 88 lbs.

STANDARD FINISHES:



WHITE

PREMIUM FINISHES:



BLACK

MEXICAN
SAND

SANDBAR

STERLING
SILVER

UPGRADE FINISHES:



ALMOND

BISCUIT

BONE

LINEN



Dreamstone

Shower Wall Kit

- Easy to install and maintain for the perfect shower space solution
- Available in many standard sizes, colors and patterns guaranteed to fit any design aesthetic
- Textured grout line offered on select patterns offers a realistic, no maintenance upgrade
- Available in 14 Standard & 30 special order color finishes

AVAILABLE FINISHES:





Theorem Multidimensional Pattern

Wall Surround Set - Cast Marble

- Smooth Side Walls up to 40"W x 96"H
- Textured Back Walls (2 pieces, 31"W x 96"H) up to 62"W x 96"H
- Nominal thickness of 1/4", with a variance of 1/8"
- Mold, mildew, bacteria, heat, and scratch resistant. Complies to ANSI and ASTM (fire rating) standards. MAS Certified Green product.

AVAILABLE FINISHES:



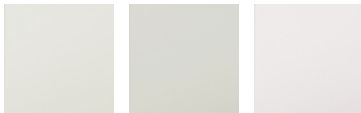


Interval Contemporary

Wall Surround System - Cast Marble

- Side Walls up to 36"W x 96"H
- Back Walls up to 62"W x 96"H
- Nominal thickness of 1/4", with a variance of 1/8"
- Mold, mildew, bacteria, heat, and scratch resistant. Complies to ANSI and ASTM (fire rating) standards. MAS Certified Green product.

AVAILABLE FINISHES:



CREAM

IVORY

WARM
WHITE



3x12 Herringbone

Wall Surround Set - Cast Marble

- Side Walls up to 36" wide by 96" high. Back Wall is 2 pieces, one 44"W x 96"H and the other includes a 28"W x 96"H with a 6" listello (which creates a 72"W x 96"H back wall).
- Nominal thickness of 1/4", with a variance of 1/8", a sanded grout line, and 3"x12" tiles for a handmade look
- Mold, mildew, bacteria, heat, and scratch resistant. Complies to ANSI and ASTM (fire rating) standards. MAS Certified Green product.
- Available without the 28" back wall piece (which includes the 6" listello).

AVAILABLE FINISHES:



CREAM

IVORY

WARM
WHITE

SOLID
WHITE



AcryIX Subway

Tile

- 1-piece tub-shower with an ergonomic backrest and shower units with a subway tile finish, slip-resistant bottom, and LH-RH drain options
- Includes ArmorCore, which is a fiberglass reinforcement on the back of these one-piece units built in a “grid” type shape that moves with the curves of the product
- Includes AcryIX, which is an applied protective coating made of a blend of resin and glass, which creates increased surface durability, and helps to maintain the luster of the product for its lifetime
- Shower sizes available from 36” to 60”, and tub-shower sizes available from 60”x30” to 66”x36”, with AFR options. AFR skirt height for tub-shower combinations is typically 3” taller than standard. Product net weight is 137 lbs.

AVAILABLE FINISHES:



WHITE
GLOSS



IMI Litecast

Trench Base

- Trench/Linear Drain Shower Base, Solid One-Piece Construction that meets ANSI Standards, ASTM Fire Rating, and is MAS Certified Green
- Pre-leveled, rests on subfloor and is mold, mildew, and bacteria resistant
- Stain resistant, waterproof, and leakproof
- Ability to move the drain location anywhere within the trench itself in order to accommodate a wide range of drain locations

AVAILABLE FINISHES:



CREAM

IVORY

WARM
WHITE

SOLID
WHITE

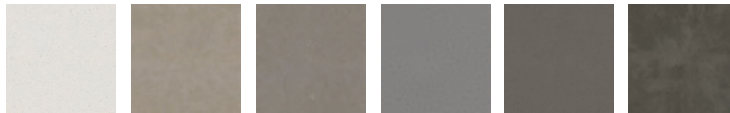


Swan Front Trench

Trench Base

- Stylish patented wall-to-wall trench grate keeps the water in the shower
- ADA Code compliant base that does not require slab recessing
- Removable snap-in trench grate allows easy access to the drain for ease of cleaning
- Available in 14 Standard & 30 special order color finishes

AVAILABLE FINISHES:



BIRCH

LIMESTONE

CLAY

ASH GRAY

SANDSTONE

CHARCOAL
GRAY



AcrylX Icon

Bases

- Shower bases include a sloped threshold, which ensures water containment and includes integrated weep holes to keep the water in. Pre-leveled shower bases do not require any mortar bed underneath.
- Includes ArmorCore, which is a fiberglass reinforcement on the back of these one-piece units built in a “grid” type shape that moves with the curves of the product
- Includes AcrylX, which is an applied protective coating made of a blend of resin and glass, which creates increased surface durability, and helps to maintain the luster of the product for its lifetime
- Shower base sizes available range from 32” x 32” to 72” x 48” and include either Center Drain and/or LH/RH end drains

AVAILABLE FINISHES:



WHITE

BISCUIT

BONE



